



We'll watch your backs!

Evan Davies
Southampton

Jason Harvey
Portsmouth

Sponsors of evening Kyphon/St Francis Medical

www.spinesurgeon.org.uk

Programme

Introduction to Wickham Wines

Evan Davies

Jason Harvey

Questions

Supper

Mr Evan Davies

Consultant Spinal Surgeon



SUHT
Spire (Chalybeate) Southampton

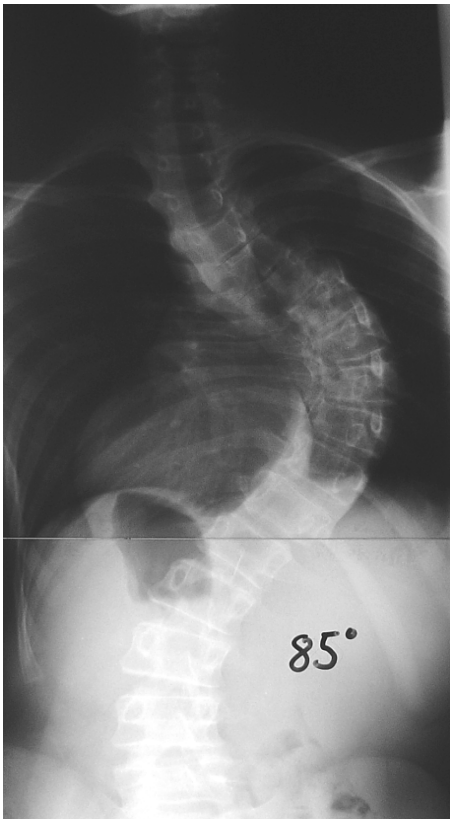
www.spinesurgeon.org.uk

Whom am I



www.spinesurgeon.org.uk

Spinal Deformity



Southampton Children's Hospital

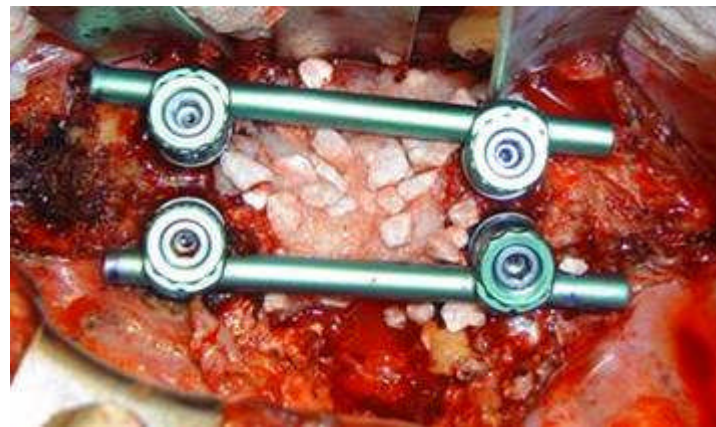
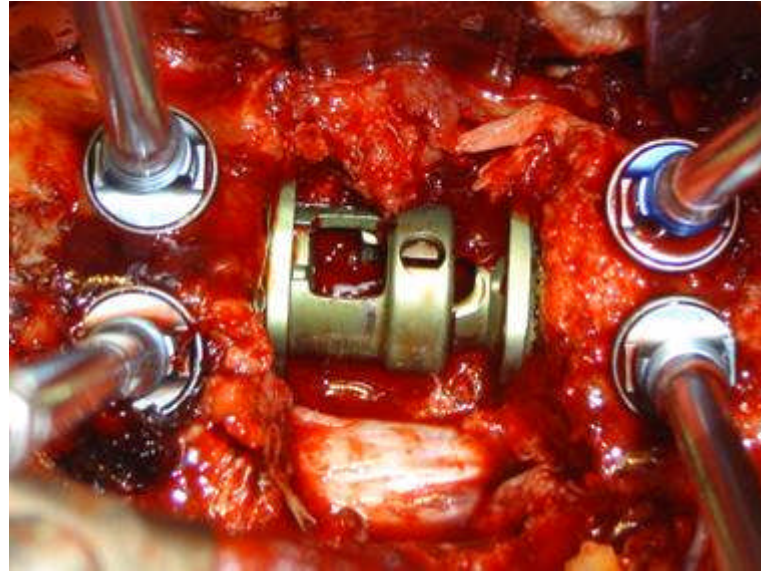


www.spinesurgeon.org.uk

Cervical Spine



Tumour



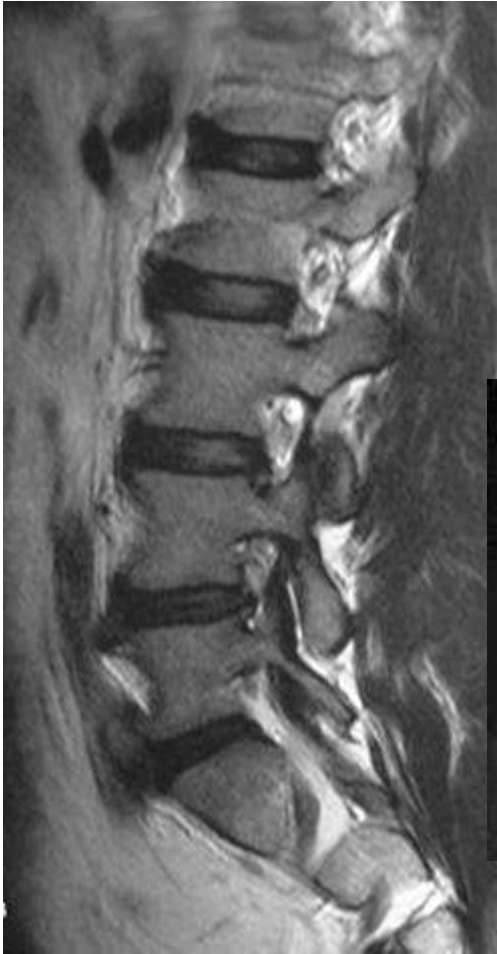
What do I do-Trauma





www.spinesurgeon.org.uk

X-stop



Infective



Kyphoplasty

Osteoporosis



Normal Bone



Osteoporotic Bone

EU Incidence of Vertebral Body Compression Fracture (VCF)

- Most Common Fracture
- 117 per 100.000



Signs of VCF

Acute Event

Chronic Manifestations

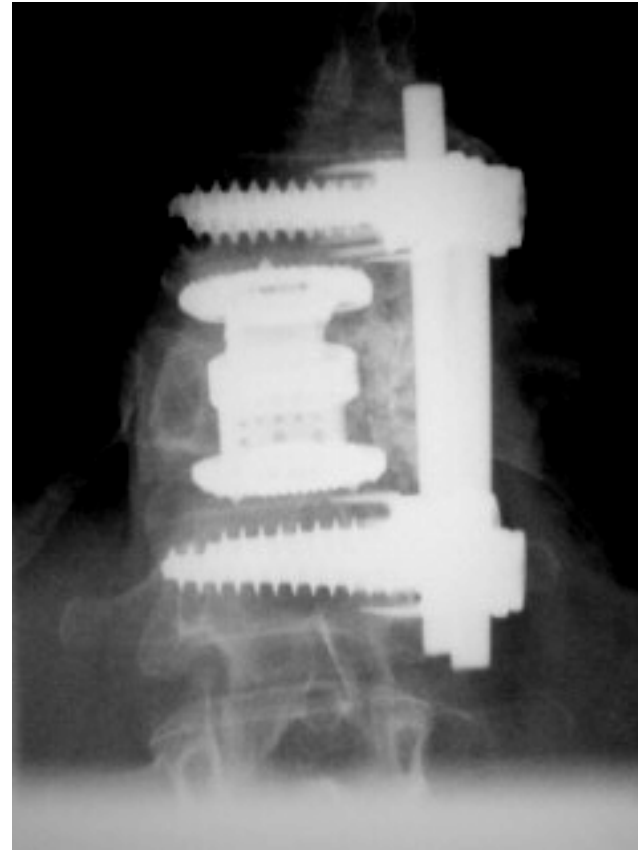


VCF Treatment Options

Management for Pain

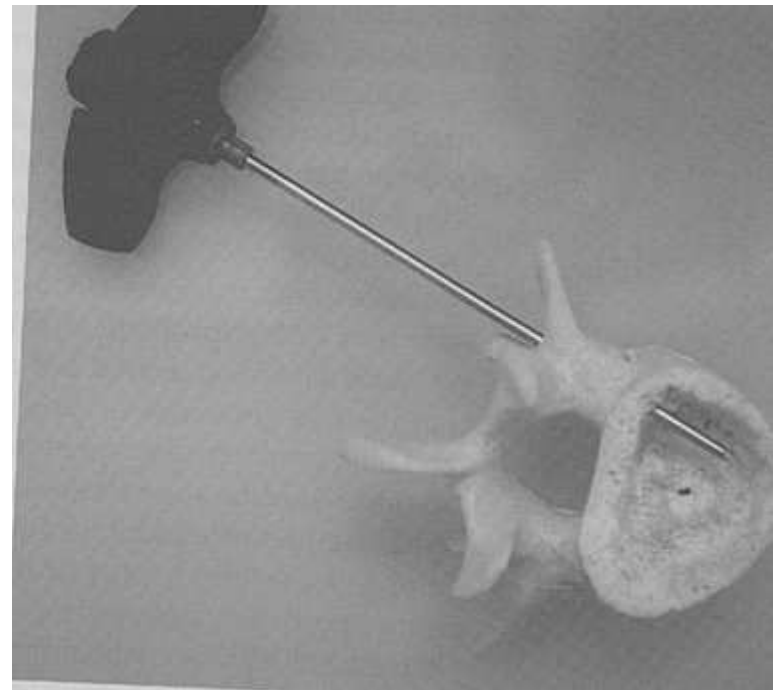
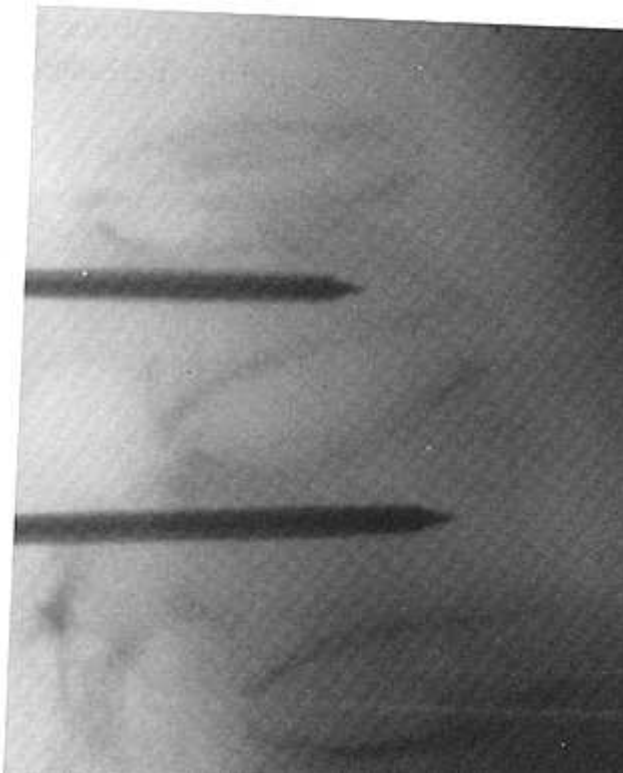
Medical
management

Open Surgical
Treatment

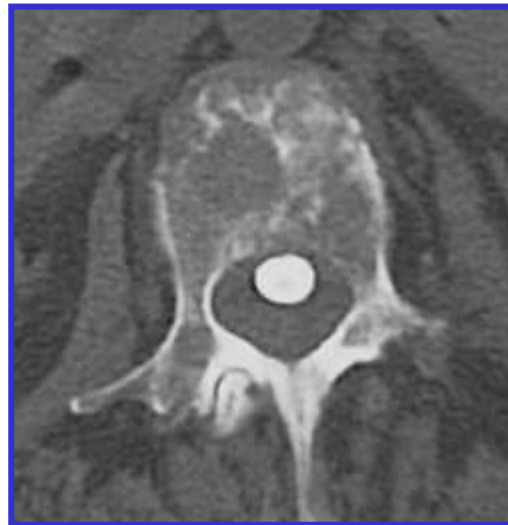


Vertebroplasty

Deramond & Galibert, *France, 1984*

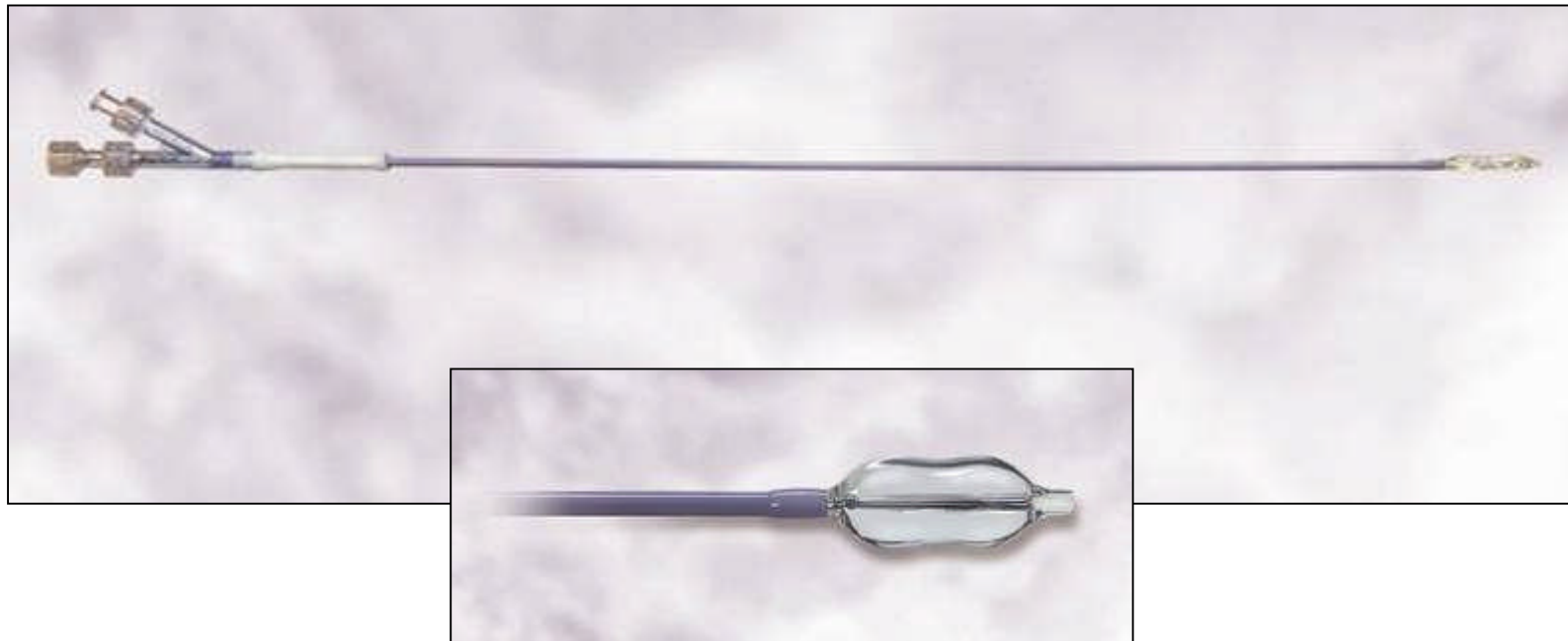


Vertebroplasty *Shortcomings*



Balloon Kyphoplasty

Mark Reiley M.D., Berkeley, Calif. 1998

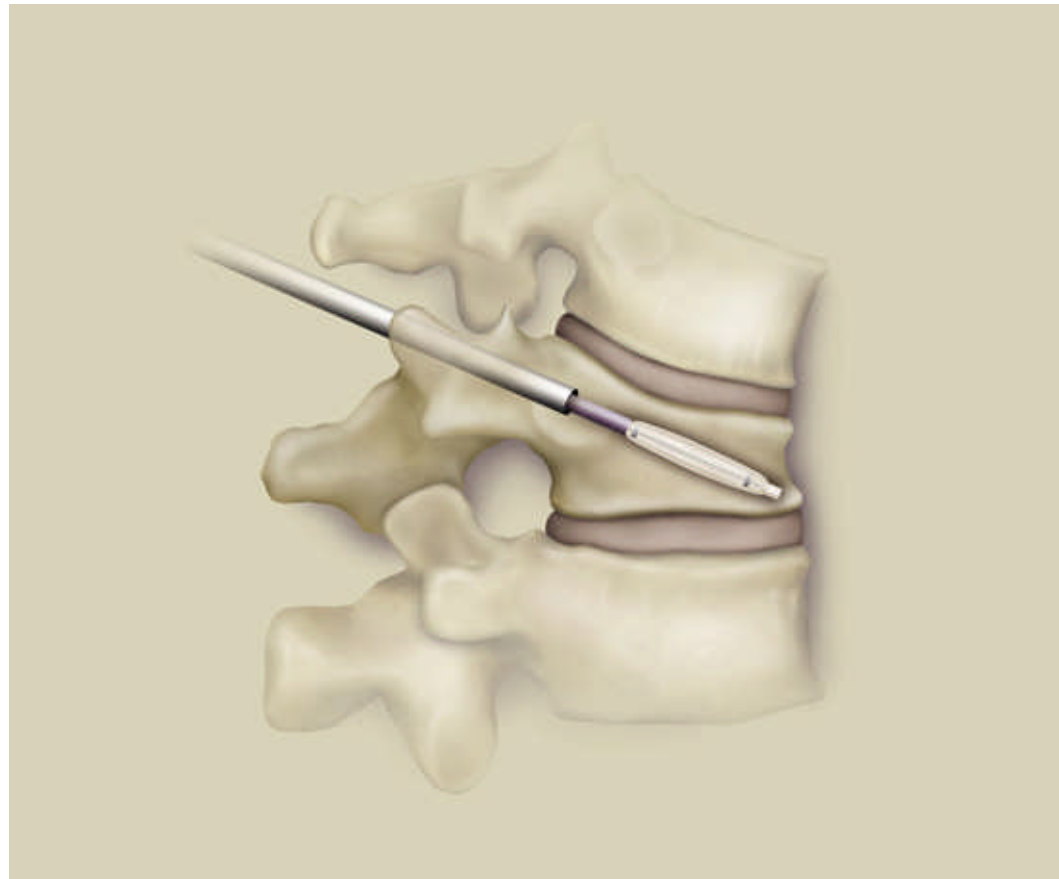


Balloon Kyphoplasty

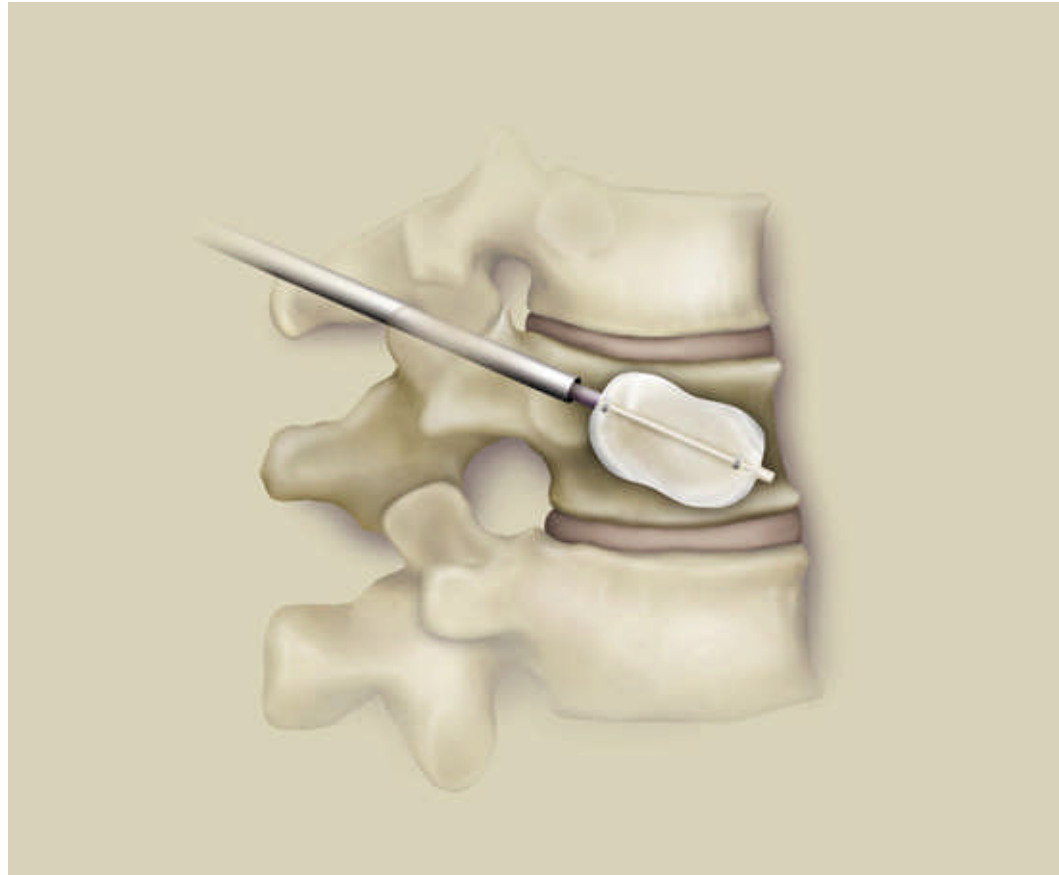


Minimally Invasive design to relieve pain

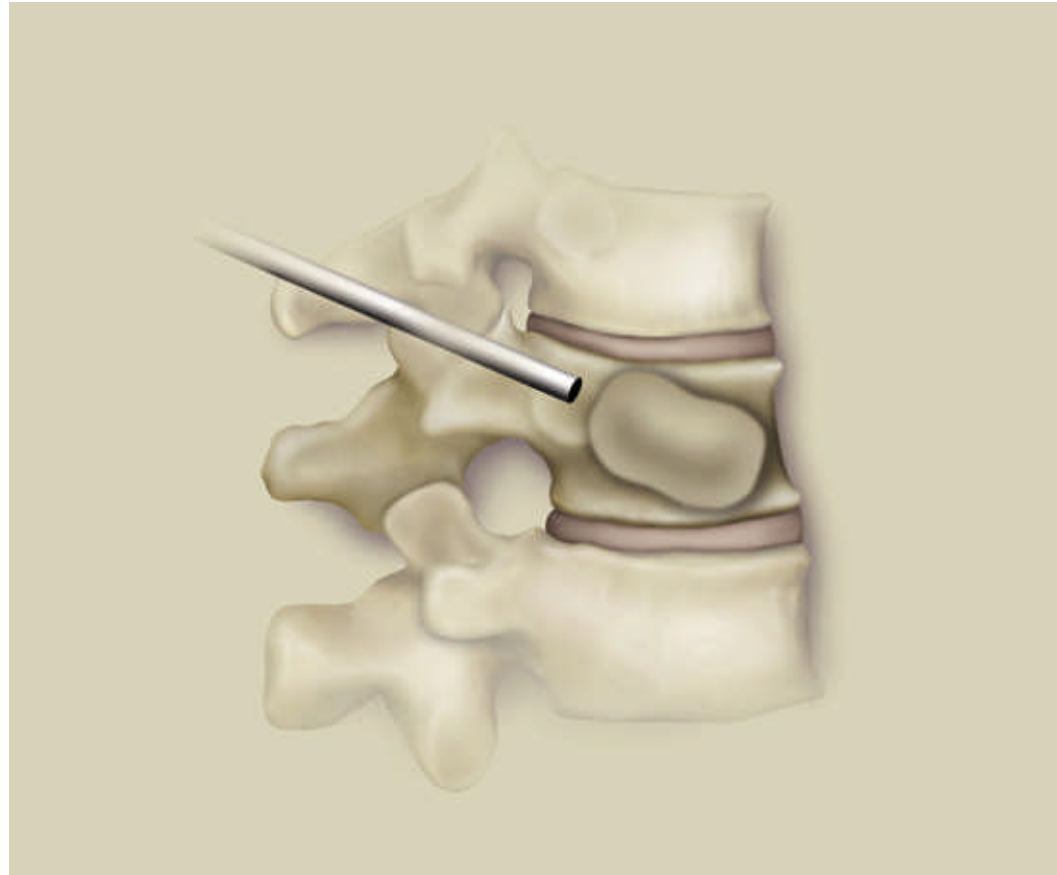
Balloon Kyphoplasty *Fracture Treatment Outline*



Balloon Kyphoplasty *Fracture Treatment Outline*



Balloon Kyphoplasty *Fracture Treatment Outline*



Balloon Kyphoplasty *Fracture Treatment Outline*



IBT Inflation

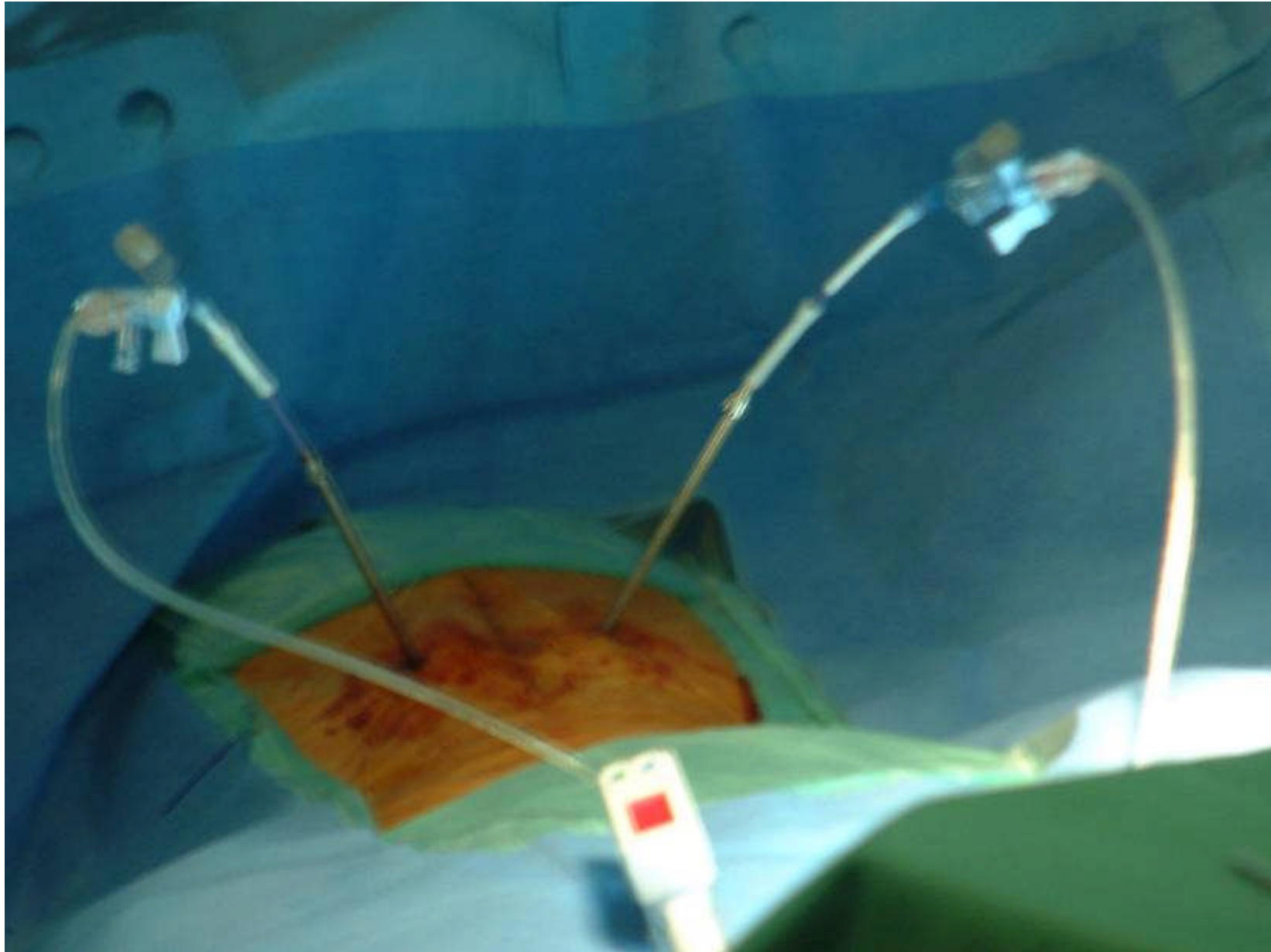


Cementing AP

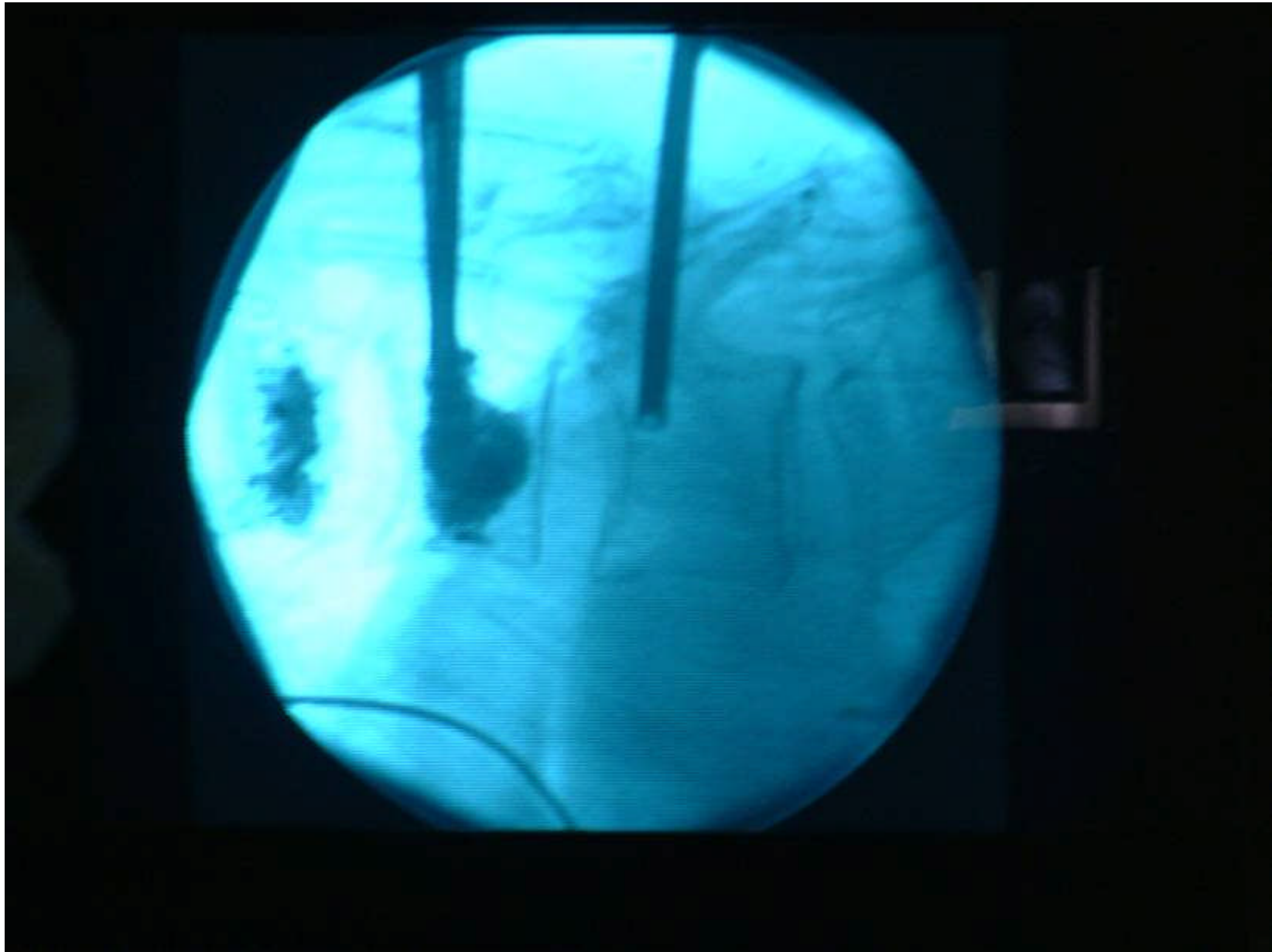




www.spinesurgeon.org.uk



www.spinesurgeon.org.uk



www.spinesurgeon.org.uk

Pain Relief

Wong	94% of patients report good to excellent pain relief
Garfin	90% improvement in pain. Most patients went from narcotic analgesics to <i>over-the-counter</i> pain meds.

Kyphoplasty in tumours



Treatment Availability

- NICE Approved
- SUHT/QAH
- Spire (formally BUPA)
Evan Southampton
Jason Portsmouth



What is happening in the NHS?

- PCT
- Orthopaedic Choice
- SUHT
- RSH
- Surgeons



NHS

- SUHT
Paeds/deformity/
tumours/fractures/
infection
- Orthopaedic Choice
Adult Degenerative
work



Privately

- ***Spire(Chalybeate)Southampton***

Bournemouth Nuffield

Romsey Physiotherapy Clinic

- ***Back Pain Assessment Clinic***

Spire Hospital Southampton

(Physio/Davies/Hazlegrove)

What to refer

- Red Flags (Surgeon)
- Yellow Flags (Hazlegrove/PAT)
- Persistent leg/arm pain greater than 6 weeks
- Back Pain causing daily disability and preventing work and play

Thank you



www.spinesurgeon.org.uk

www.spinesurgeon.org.uk